

TEL:.....+47 67 03 00 00

E-mail:.....aim@avinor.no



# AVINOR

## NORWAY

AERONAUTICAL INFORMATION  
MANAGEMENT  
P.O. BOX 150  
NO-2061 GARDERMOEN

**AIP AIRAC SUP**  
**20/2023**  
**EFF 07 SEP 2023**

**Publication date: 10 AUG 2023**

### **ENZV - RNP AR-prosedyrer for Stavanger lufthavn, Sola**

Vedlagt denne AIP SUP finnes RNP AR-prosedyrer til Stavanger lufthavn, Sola.

De vedlagte prosedyrene publiseres kun for kontrollflygings- og godkjenningssøyemed og vil i utgangspunktet ikke være tilgjengelig for vanlige operasjoner. Frem til prosedyrene er godkjent av Luftfartstilsynet er prosedyrene suspenderte.

Operatører bes om å ikke anmode lufttrafikkjenesten om å fly RNP AR-prosedyrer.

Vedlagt er følgende prosedyrer komplett med kart, anbefalt koding og liste med signifikante punkter:

1. RNP E RWY 18 (AR)
2. RNP N RWY 18 (AR)
3. RNP S RWY 18 (AR)
4. RNP W RWY 18 (AR)
5. RNP E RWY 36 (AR)
6. RNP O RWY 36 (AR)
7. RNP S RWY 36 (AR)
8. RNP W RWY 36 (AR)

- Vedlegg -

### **ENZV - RNP AR procedures for Stavanger airport, Sola**

Attached to this AIP SUP are RNP AR procedures for Stavanger airport, Sola.

The attached procedures are intended solely for flight validation purposes. The procedures have not yet been approved by the Norwegian Civil Aviation Authority and are suspended from normal operational use.

Operators are asked not to request these procedures from Air Traffic Services.

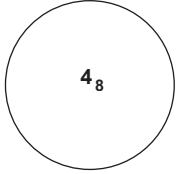
Attached are the following procedures complete with chart, recommended coding and significant points pages:

1. RNP E RWY 18 (AR)
2. RNP N RWY 18 (AR)
3. RNP S RWY 18 (AR)
4. RNP W RWY 18 (AR)
5. RNP E RWY 36 (AR)
6. RNP O RWY 36 (AR)
7. RNP S RWY 36 (AR)
8. RNP W RWY 36 (AR)

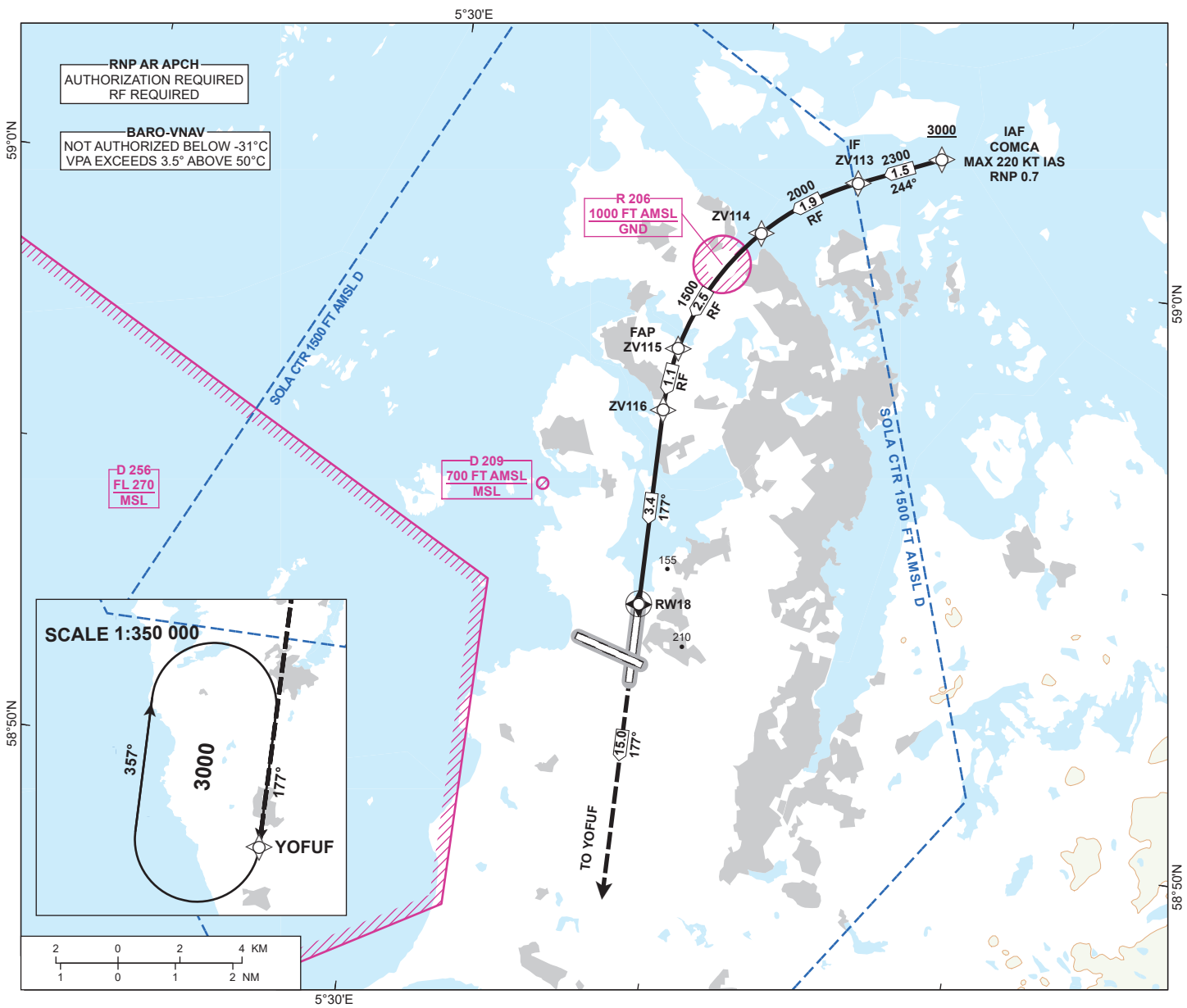
- Attachment -

# INSTRUMENT APPROACH CHART - ICAO

## STAVANGER SOLA RNP E RWY 18 (AR)

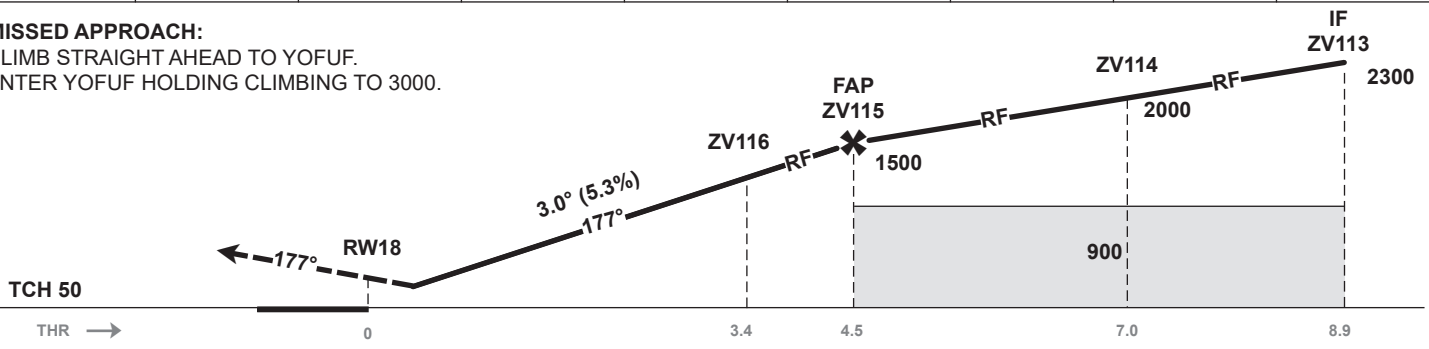
|  |                      |                                     |
|--|----------------------|-------------------------------------|
| <br>MSA 25 NM ARP | ATIS: 126.000        | AD ELEV: 30                         |
|  | APP: 119.600 119.400 | THR ELEV: 10                        |
|  | 118.500              | HGT RELATED TO THR 18               |
|  | TWR: 118.350 122.100 | CIRCLING HGT RELATED TO AD ELEV     |
|  | GND: 121.750         | DIST IN NM. ELEV, ALT AND HGT IN FT |
| SCALE 1:200 000  |                      | VAR 2° E (2020)                     |

TRANSITION ALTITUDE  
7000



|              |   |   |   |   |   |   |   |   |
|--------------|---|---|---|---|---|---|---|---|
| DIST TO RW18 | 9 | 8 | 7 | 6 | 5 | 4 | 3 | 2 |
| ALT (HGT)    | - | - | - | - | - | - | - | - |

**MISSED APPROACH:**  
CLIMB STRAIGHT AHEAD TO YOFUF.  
ENTER YOFUF HOLDING CLIMBING TO 3000.



| CAT OF ACFT            |                 | A         | B         | C           | D           |
|------------------------|-----------------|-----------|-----------|-------------|-------------|
| OCA (H)<br>STRAIGHT-IN | RNP 0.3 (2.5%*) | 328 (318) | 348 (338) | 366 (356)   | 385 (375)   |
|                        | RNP 0.3 (5.0%*) | -         | 346 (336) | 354 (344)   | 366 (356)   |
| CIRCLING               |                 | 700 (670) |           | 1150 (1120) | 1680 (1650) |

NOTE: \*MNM MISSED APCH CLIMB GRADIENT.

CHANGES: NEW PROCEDURE.

## ENZV RNP E RWY 18 (AR) - RECOMMENDED CODING

| SN | PD | WI    | Fly-over | °M (°T)        | MAG VAR | DIST (NM) | REC NAVAID | TD | ALT (FT) | Speed (KT) | VPA (°)/TCH (FT) | ARC CENTRE RADIUS (NM) | RNP (NM) |
|----|----|-------|----------|----------------|---------|-----------|------------|----|----------|------------|------------------|------------------------|----------|
| 10 | IF | COMCA | -        | -              | -2.0    | -         | -          | -  | A3000+   | K220-      | -                | -                      | 0.7      |
| 20 | TF | ZV113 | -        | -              | -2.0    | 1.5       | -          | -  | A2300+   | -          | -                | -                      | 0.7      |
| 30 | RF | ZV114 | -        | -              | -2.0    | 1.9       | -          | L  | A2000+   | -          | -                | ZV004<br>4.700         | 0.7      |
| 40 | RF | ZV115 | -        | -              | -2.0    | 2.5       | -          | L  | A1500+   | -          | -                | ZV004<br>4.700         | 0.7      |
| 50 | RF | ZV116 | -        | -              | -2.0    | 1.1       | -          | L  | -        | -          | -3.0             | ZV004<br>4.700         | 0.3      |
| 60 | TF | RW18  | Y        | -              | -2.0    | 3.4       | -          | -  | -        | -          | -3.0/50          | -                      | 0.3      |
| 70 | TF | YOFUF | -        | -              | -2.0    | 15.0      | -          | -  | -        | -          | -                | -                      | 1.0      |
| 80 | HM | YOFUF | -        | 177<br>(179.1) | -2.0    | 1 MIN     | -          | R  | A3000    | -          | -                | -                      | 1.0      |

Note: Recommended coding is based on ARINC 424 and is provided solely to indicate which procedure design protection areas were used in the Instrument Flight Procedure Design process.

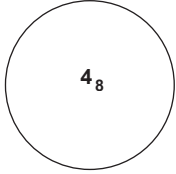
**ENZV RNP E RWY 18 (AR) - SIGNIFICANT POINTS**

| <b>Name</b> | <b>Latitude</b> | <b>Longitude</b> |
|-------------|-----------------|------------------|
| COMCA       | 590156.85N      | 0054614.30E      |
| YOFUF       | 583837.68N      | 0053841.16E      |
| ZV004       | 585702.92N      | 0054712.65E      |
| ZV113       | 590120.54N      | 0054333.77E      |
| ZV114       | 590015.04N      | 0054034.66E      |
| ZV115       | 585804.20N      | 0053821.17E      |
| ZV116       | 585658.86N      | 0053808.29E      |

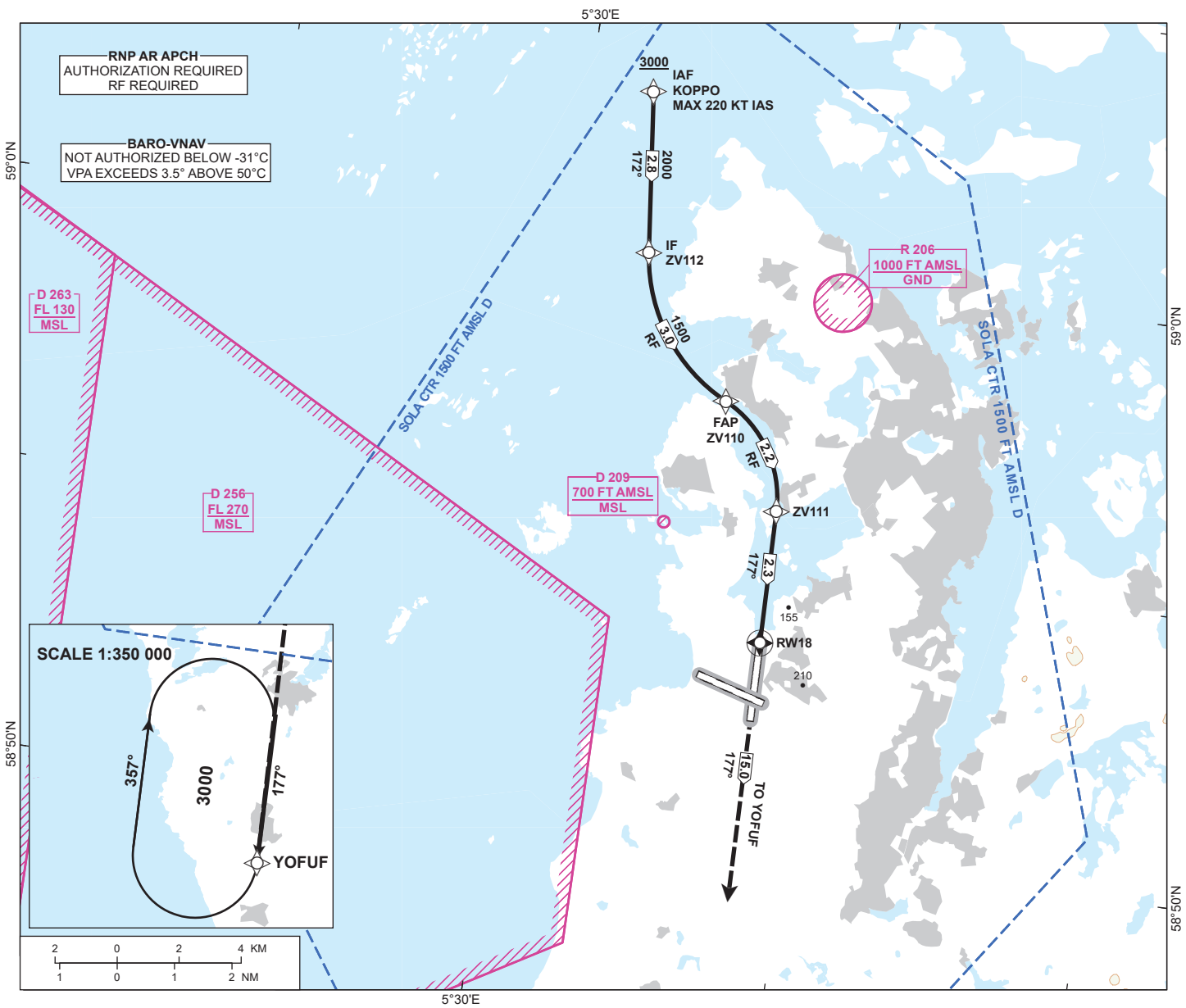
CHANGES: NEW PAGE

# INSTRUMENT APPROACH CHART - ICAO

## STAVANGER SOLA RNP N RWY 18 (AR)

|  |                      |                                     |
|--|----------------------|-------------------------------------|
| <br>MSA 25 NM ARP | ATIS: 126.000        | AD ELEV: 30                         |
|  | APP: 119.600 119.400 | THR ELEV: 10                        |
|  | 118.500              | HGT RELATED TO THR 18               |
|  | TWR: 118.350 122.100 | CIRCLING HGT RELATED TO AD ELEV     |
|  | GND: 121.750         | DIST IN NM. ELEV, ALT AND HGT IN FT |
|  | SCALE 1:200 000      | VAR 2° E (2020)                     |

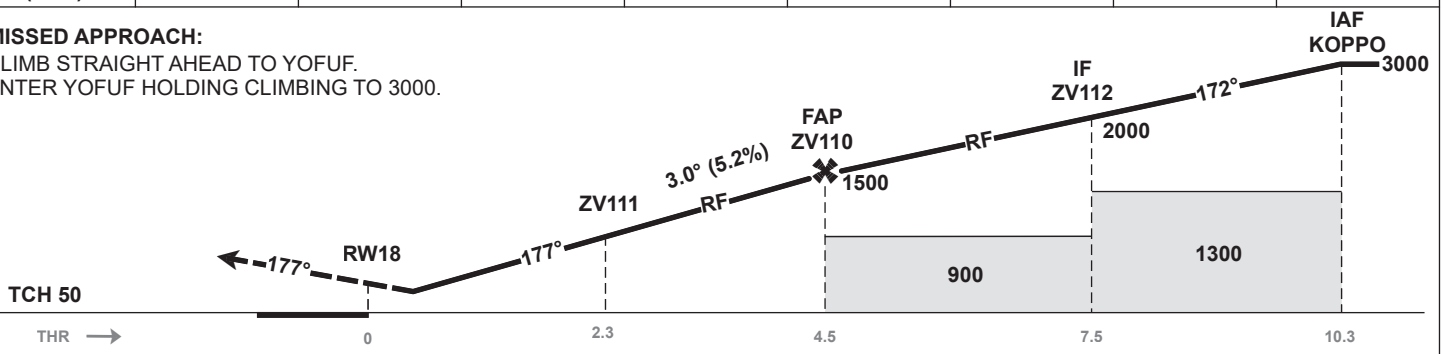
TRANSITION ALTITUDE  
7000



|              |   |   |   |   |   |   |   |   |
|--------------|---|---|---|---|---|---|---|---|
| DIST TO RW18 | 9 | 8 | 7 | 6 | 5 | 4 | 3 | 2 |
| ALT (HGT)    | - | - | - | - | - | - | - | - |

**MISSED APPROACH:**

CLIMB STRAIGHT AHEAD TO YOFUF.  
ENTER YOFUF HOLDING CLIMBING TO 3000.



| CAT OF ACFT            |                 | A         | B         | C           | D           |
|------------------------|-----------------|-----------|-----------|-------------|-------------|
| OCA (H)<br>STRAIGHT-IN | RNP 0.3 (2.5%*) | 328 (318) | 348 (338) | 366 (356)   | 385 (375)   |
|                        | RNP 0.3 (5.0%*) | -         | 346 (336) | 354 (344)   | 366 (356)   |
| CIRCLING               |                 | 700 (670) |           | 1150 (1120) | 1680 (1650) |

NOTE: \*MNM MISSED APCH CLIMB GRADIENT.

CHANGES: NEW PROCEDURE.

**ENZV RNP N RWY 18 (AR) - RECOMMENDED CODING**

| SN | PD | WI    | Fly-over | °M (°T)        | MAG VAR | DIST (NM) | REC NAVAID | TD | ALT (FT) | Speed (KT) | VPA (°)/TCH (FT) | ARC CENTRE RADIUS (NM) | RNP (NM) |
|----|----|-------|----------|----------------|---------|-----------|------------|----|----------|------------|------------------|------------------------|----------|
| 10 | IF | KOPPO | -        | -              | -2.0    | -         | -          | -  | A3000+   | K220-      | -                | -                      | 1.0      |
| 20 | TF | ZV112 | -        | -              | -2.0    | 2.8       | -          | -  | A2000+   | -          | -                | -                      | 1.0      |
| 30 | RF | ZV110 | -        | -              | -2.0    | 3.0       | -          | L  | A1500+   | -          | -                | ZV003<br>3.000         | 1.0      |
| 40 | RF | ZV111 | -        | -              | -2.0    | 2.2       | -          | R  | -        | -          | -3.0             | ZV002<br>2.000         | 0.3      |
| 50 | TF | RW18  | Y        | -              | -2.0    | 2.3       | -          | -  | -        | -          | -3.0/50          | -                      | 0.3      |
| 60 | TF | YOFUF | -        | -              | -2.0    | 15.0      | -          | -  | -        | -          | -                | -                      | 1.0      |
| 70 | HM | YOFUF | -        | 177<br>(179.1) | -2.0    | 1 MIN     | -          | R  | A3000    | -          | -                | -                      | 1.0      |

Note: Recommended coding is based on ARINC 424 and is provided solely to indicate which procedure design protection areas were used in the Instrument Flight Procedure Design process.

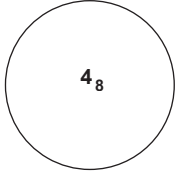
**ENZV RNP N RWY 18 (AR) - SIGNIFICANT POINTS**

| <b>Name</b> | <b>Latitude</b> | <b>Longitude</b> |
|-------------|-----------------|------------------|
| KOPPO       | 590247.44N      | 0053206.49E      |
| YOFUF       | 583837.68N      | 0053841.16E      |
| ZV002       | 585551.10N      | 0053418.76E      |
| ZV003       | 590021.03N      | 0053828.98E      |
| ZV110       | 585739.09N      | 0053558.72E      |
| ZV111       | 585553.03N      | 0053810.27E      |
| ZV112       | 590000.92N      | 0053243.14E      |

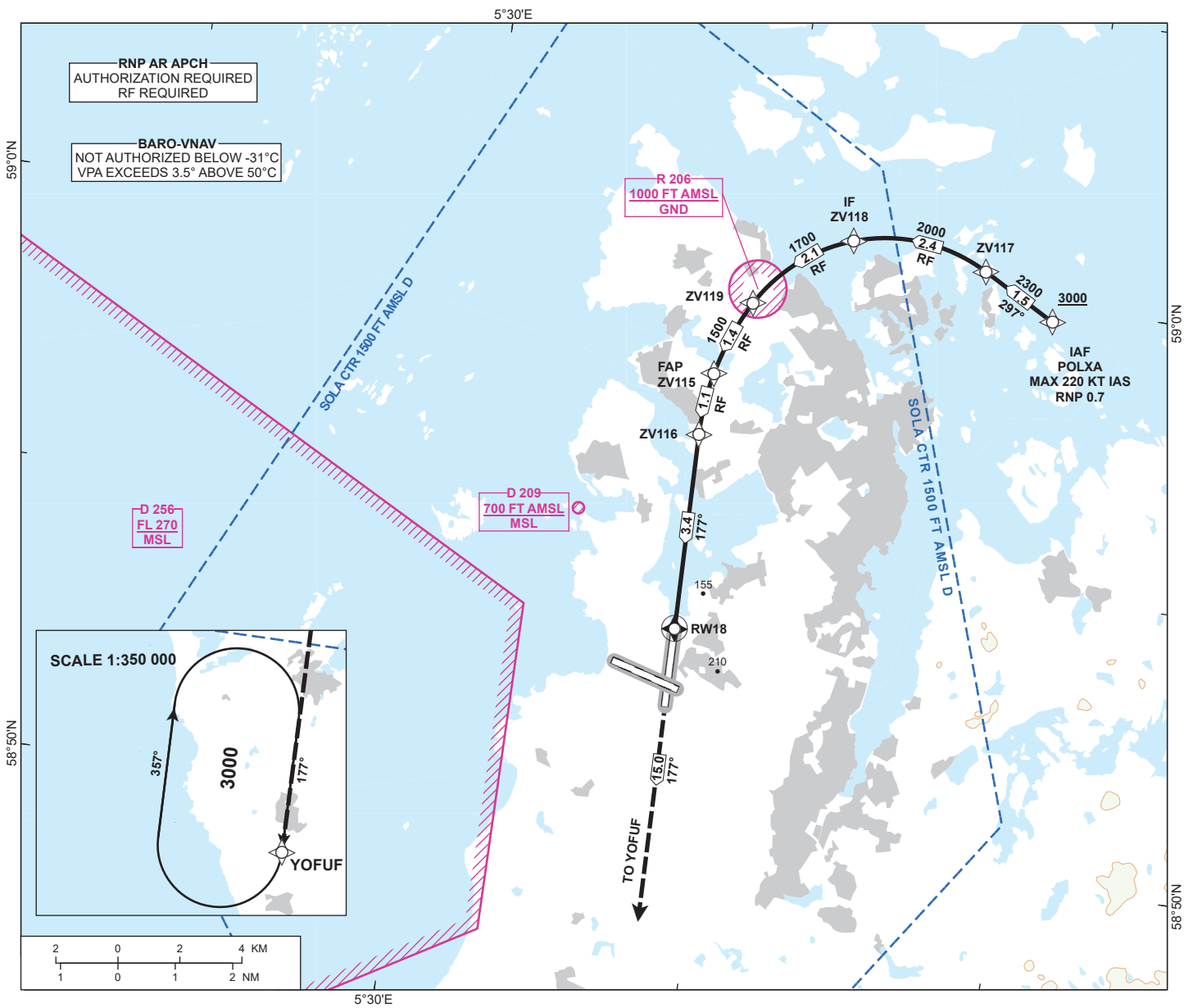
CHANGES: NEW PAGE

# INSTRUMENT APPROACH CHART - ICAO

## STAVANGER SOLA RNP S RWY 18 (AR)

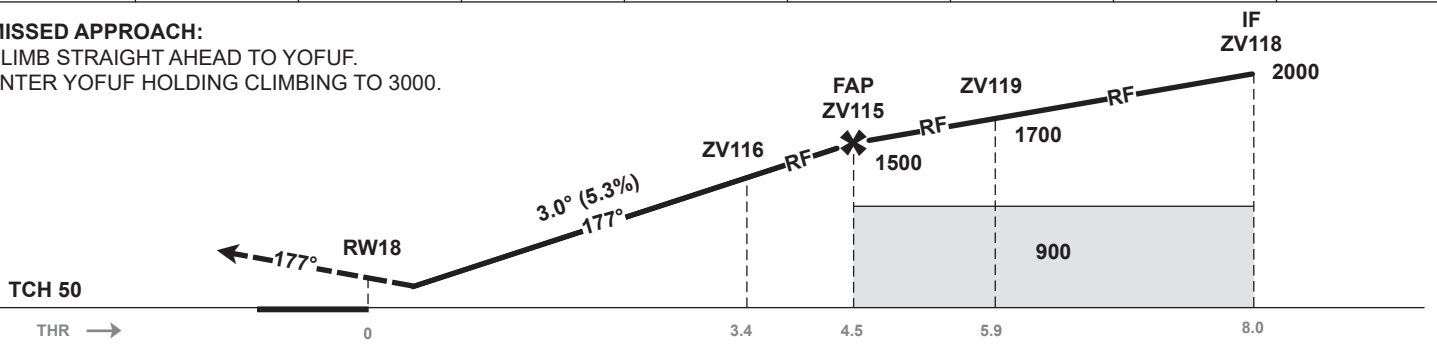
|  |                      |                                     |
|--|----------------------|-------------------------------------|
| <br>MSA 25 NM ARP | ATIS: 126.000        | AD ELEV: 30                         |
|  | APP: 119.600 119.400 | THR ELEV: 10                        |
|  | 118.500              | HGT RELATED TO THR 18               |
|  | TWR: 118.350 122.100 | CIRCLING HGT RELATED TO AD ELEV     |
|  | GND: 121.750         | DIST IN NM. ELEV, ALT AND HGT IN FT |
| SCALE 1:200 000  |                      | VAR 2° E (2020)                     |

TRANSITION ALTITUDE  
7000



|              |   |   |   |   |   |   |   |   |
|--------------|---|---|---|---|---|---|---|---|
| DIST TO RW18 | 9 | 8 | 7 | 6 | 5 | 4 | 3 | 2 |
| ALT (HGT)    | - | - | - | - | - | - | - | - |

**MISSED APPROACH:**  
CLIMB STRAIGHT AHEAD TO YOFUF.  
ENTER YOFUF HOLDING CLIMBING TO 3000.



| CAT OF ACFT            |                 | A         | B         | C           | D           |
|------------------------|-----------------|-----------|-----------|-------------|-------------|
| OCA (H)<br>STRAIGHT-IN | RNP 0.3 (2.5%*) | 328 (318) | 348 (338) | 366 (356)   | 385 (375)   |
|                        | RNP 0.3 (5.0%*) | -         | 346 (336) | 354 (344)   | 366 (356)   |
| CIRCLING               |                 | 700 (670) |           | 1150 (1120) | 1680 (1650) |

NOTE: \*MNM MISSED APCH CLIMB GRADIENT.

CHANGES: NEW PROCEDURE.



## ENZV RNP S RWY 18 (AR) - RECOMMENDED CODING

| SN | PD | WI    | Fly-over | °M (°T)        | MAG VAR | DIST (NM) | REC NAV AID | TD | ALT (FT) | Speed (KT) | VPA (°)/TCH (FT) | ARC CENTRE RADIUS (NM) | RNP (NM) |
|----|----|-------|----------|----------------|---------|-----------|-------------|----|----------|------------|------------------|------------------------|----------|
| 10 | IF | POLXA | -        | -              | -2.0    | -         | -           | -  | A3000+   | K220-      | -                | -                      | 0.7      |
| 20 | TF | ZV117 | -        | -              | -2.0    | 1.5       | -           | -  | A2300+   | -          | -                | -                      | 0.7      |
| 30 | RF | ZV118 | -        | -              | -2.0    | 2.4       | -           | L  | A2000+   | -          | -                | ZV005<br>2.900         | 0.7      |
| 40 | RF | ZV119 | -        | -              | -2.0    | 2.1       | -           | L  | A1700+   | -          | -                | ZV005<br>2.900         | 0.7      |
| 50 | RF | ZV115 | -        | -              | -2.0    | 1.4       | -           | L  | A1500+   | -          | -                | ZV004<br>4.700         | 0.7      |
| 60 | RF | ZV116 | -        | -              | -2.0    | 1.1       | -           | L  | -        | -          | -3.0             | ZV004<br>4.700         | 0.3      |
| 70 | TF | RW18  | Y        | -              | -2.0    | 3.4       | -           | -  | -        | -          | -3.0/50          | -                      | 0.3      |
| 80 | TF | YOFUF | -        | -              | -2.0    | 15.0      | -           | -  | -        | -          | -                | -                      | 1.0      |
| 90 | HM | YOFUF | -        | 177<br>(179.1) | -2.0    | 1 MIN     | -           | R  | A3000    | -          | -                | -                      | 1.0      |

Note: Recommended coding is based on ARINC 424 and is provided solely to indicate which procedure design protection areas were used in the Instrument Flight Procedure Design process.

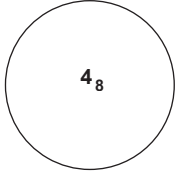
**ENZV RNP S RWY 18 (AR) - SIGNIFICANT POINTS**

| <b>Name</b> | <b>Latitude</b> | <b>Longitude</b> |
|-------------|-----------------|------------------|
| POLXA       | 585945.41N      | 0054922.41E      |
| YOFUF       | 583837.68N      | 0053841.16E      |
| ZV004       | 585702.92N      | 0054712.65E      |
| ZV005       | 585756.32N      | 0054411.52E      |
| ZV115       | 585804.20N      | 0053821.17E      |
| ZV116       | 585658.86N      | 0053808.29E      |
| ZV117       | 590027.82N      | 0054655.65E      |
| ZV118       | 590040.61N      | 0054222.99E      |
| ZV119       | 585922.21N      | 0053919.38E      |

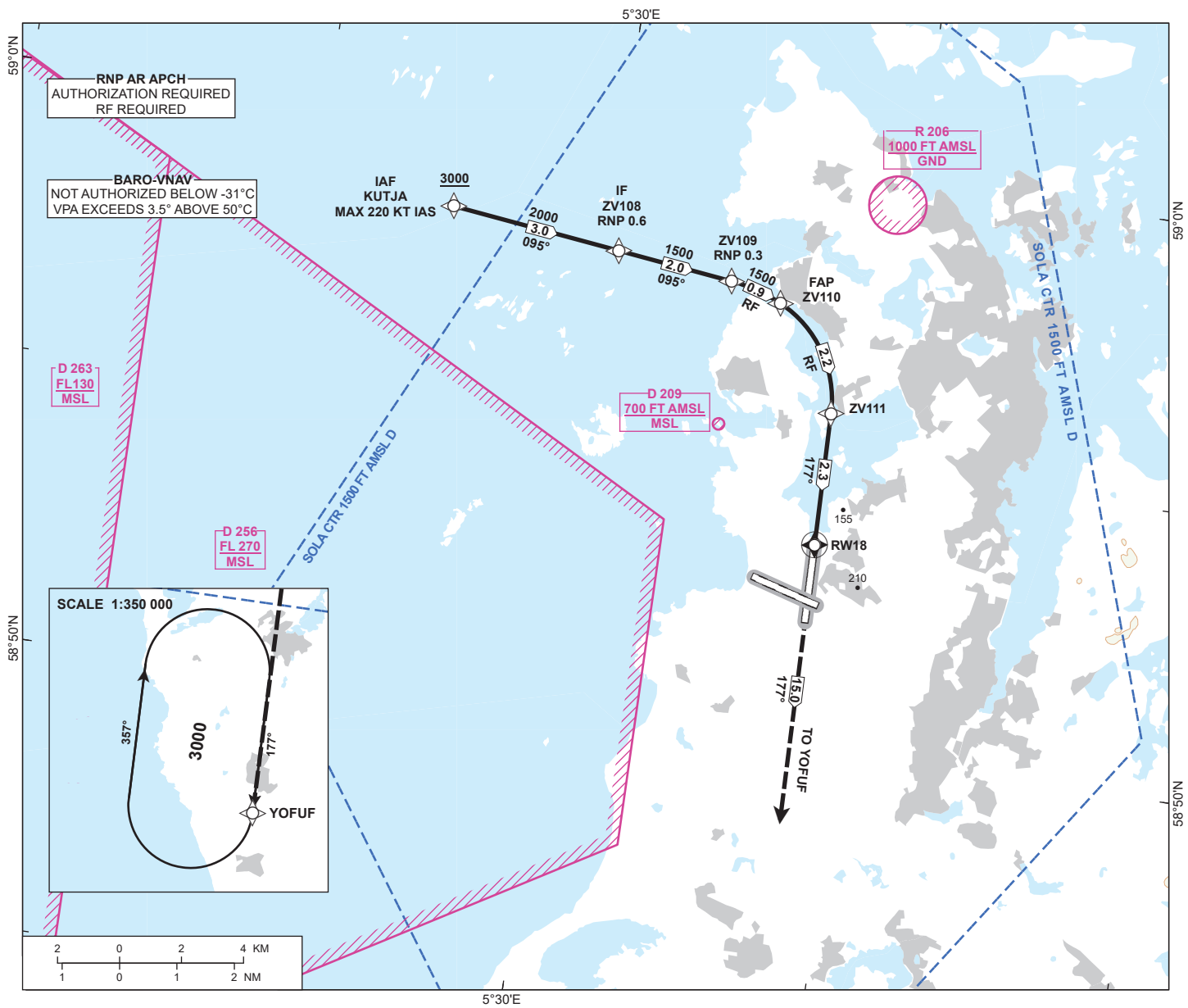
CHANGES: NEW PAGE

# INSTRUMENT APPROACH CHART - ICAO

## STAVANGER SOLA RNP W RWY 18 (AR)

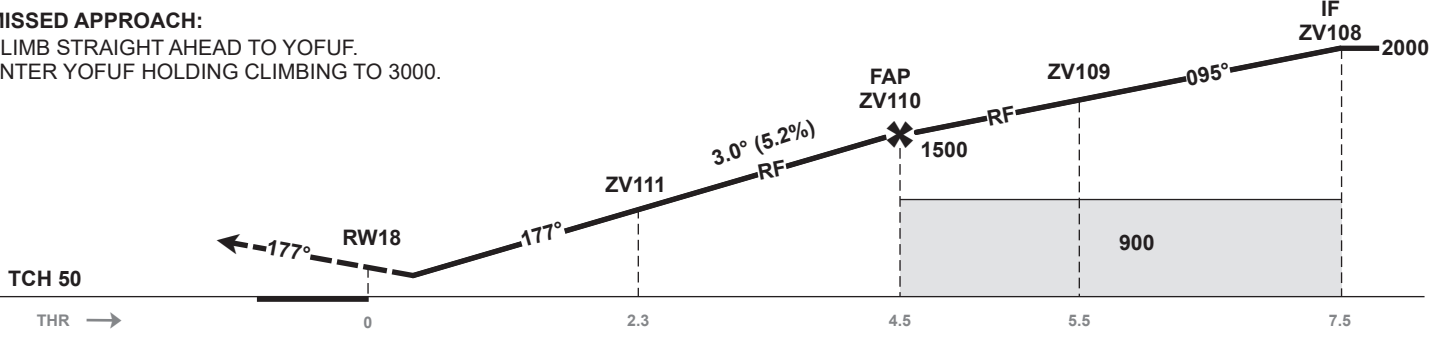
|  |                      |                                     |
|--|----------------------|-------------------------------------|
|  <p>MSA 25 NM ARP</p> | ATIS: 126.000        | AD ELEV: 30                         |
|  | APP: 119.600 119.400 | THR ELEV: 10                        |
|  | 118.500              | HGT RELATED TO THR 18               |
|  | TWR: 118.350 122.100 | CIRCLING HGT RELATED TO AD ELEV     |
|  | GND: 121.750         | DIST IN NM. ELEV, ALT AND HGT IN FT |
| SCALE 1:200 000  |                      | VAR 2° E (2020)                     |

TRANSITION ALTITUDE  
7000



|                |   |   |   |   |   |   |   |   |
|----------------|---|---|---|---|---|---|---|---|
| DIST TO RWY 18 | 9 | 8 | 7 | 6 | 5 | 4 | 3 | 2 |
| ALT (HGT)      | - | - | - | - | - | - | - | - |

**MISSED APPROACH:**  
CLIMB STRAIGHT AHEAD TO YOFUF.  
ENTER YOFUF HOLDING CLIMBING TO 3000.



| CAT OF ACFT            |                 | A         | B         | C           | D           |
|------------------------|-----------------|-----------|-----------|-------------|-------------|
| OCA (H)<br>STRAIGHT-IN | RNP 0.3 (2.5%*) | 328 (318) | 348 (338) | 366 (356)   | 385 (375)   |
|                        | RNP 0.3 (5.0%*) | -         | 346 (336) | 354 (344)   | 366 (356)   |
| CIRCLING               |                 | 700 (670) |           | 1150 (1120) | 1680 (1650) |

NOTE: \*MNM MISSED APCH CLIMB GRADIENT.

CHANGES: NEW PROCEDURE.

## ENZV RNP W RWY 18 (AR) - RECOMMENDED CODING

| SN | PD | WI    | Fly-over | °M (°T)                   | MAG VAR | DIST (NM) | REC NAVAID | TD | ALT (FT) | Speed (KT) | VPA (°)/TCH (FT) | ARC CENTRE RADIUS (NM) | RNP (NM) |
|----|----|-------|----------|---------------------------|---------|-----------|------------|----|----------|------------|------------------|------------------------|----------|
| 10 | IF | KUTJA | -        | -                         | -2.0    | -         | -          | -  | A3000+   | K220-      | -                | -                      | 1.0      |
| 20 | TF | ZV108 | -        | -                         | -2.0    | 3.0       | -          | -  | A2000+   | -          | -                | -                      | 1.0      |
| 30 | TF | ZV109 | -        | -                         | -2.0    | 2.0       | -          | -  | A1500+   | -          | -                | -                      | 0.6      |
| 40 | RF | ZV110 | -        | -                         | -2.0    | 0.9       | -          | R  | A1500+   | -          | -                | ZV001<br>2.900         | 0.3      |
| 50 | RF | ZV111 | -        | -                         | -2.0    | 2.2       | -          | R  | -        | -          | -3.0             | ZV002<br>2.000         | 0.3      |
| 60 | TF | RW18  | Y        | -                         | -2.0    | 2.3       | -          | -  | -        | -          | -3.0/50          | -                      | 0.3      |
| 70 | TF | YOFUF | -        | -                         | -2.0    | 15.0      | -          | -  | -        | -          | -                | -                      | 1.0      |
| 80 | HM | YOFUF | -        | <sup>177</sup><br>(179.1) | -2.0    | 1 MIN     | -          | R  | A3000    | -          | -                | -                      | 1.0      |

Note: Recommended coding is based on ARINC 424 and is provided solely to indicate which procedure design protection areas were used in the Instrument Flight Procedure Design process.

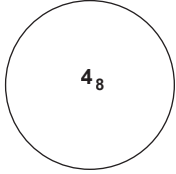
**ENZV RNP W RWY 18 (AR) - SIGNIFICANT POINTS**

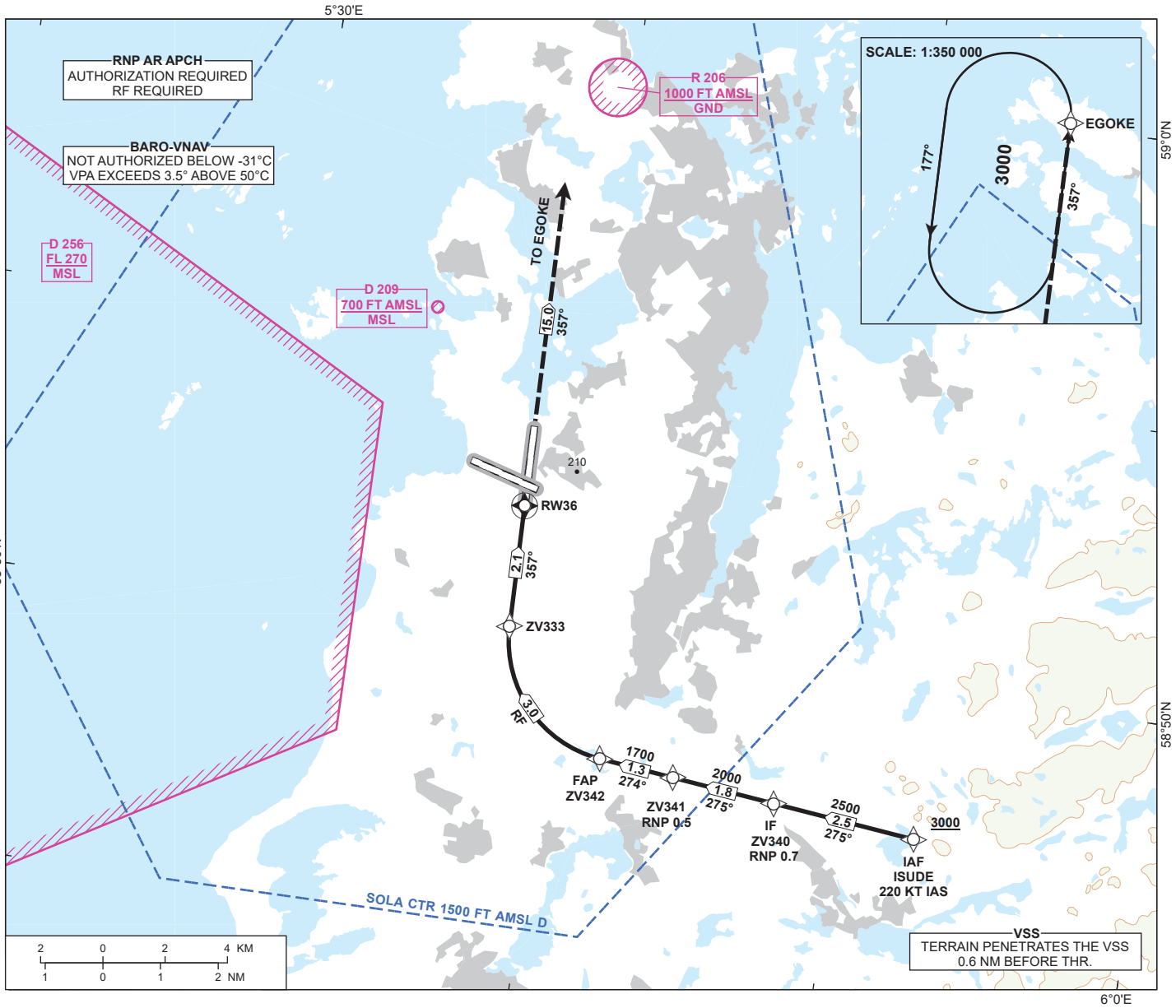
| <b>Name</b> | <b>Latitude</b> | <b>Longitude</b> |
|-------------|-----------------|------------------|
| KUTJA       | 585831.15N      | 0052439.83E      |
| YOFUF       | 583837.68N      | 0053841.16E      |
| ZV001       | 585502.50N      | 0053333.83E      |
| ZV002       | 585551.10N      | 0053418.76E      |
| ZV108       | 585809.62N      | 0053021.54E      |
| ZV109       | 585754.76N      | 0053415.04E      |
| ZV110       | 585739.09N      | 0053558.72E      |
| ZV111       | 585553.03N      | 0053810.27E      |

CHANGES: NEW PAGE

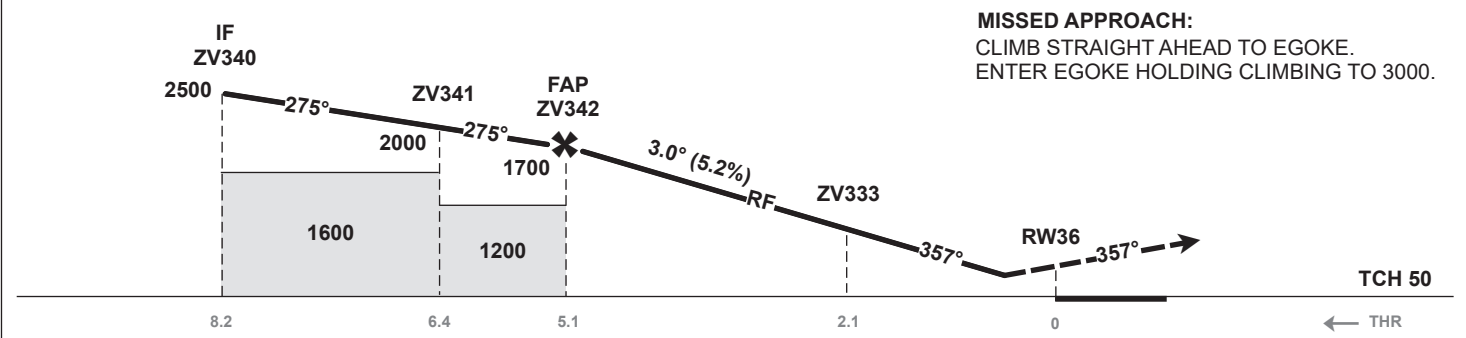
# INSTRUMENT APPROACH CHART - ICAO

**STAVANGER  
SOLA  
RNP E RWY 36 (AR)**  
TRANSITION ALTITUDE  
7000

|  |                      |                                     |
|--|----------------------|-------------------------------------|
| <br>MSA 25 NM ARP | ATIS: 126.000        | AD ELEV: 30                         |
|  | APP: 119.600 119.400 | THR ELEV: 29                        |
|  | 118.500              | HGT RELATED TO THR 36               |
|  | TWR: 118.350 122.100 | CIRCLING HGT RELATED TO AD ELEV     |
|  | GND: 121.750         | DIST IN NM. ELEV, ALT AND HGT IN FT |
|  | SCALE 1:200 000      | VAR 2° E (2020)                     |



|              |   |   |   |   |   |   |   |   |
|--------------|---|---|---|---|---|---|---|---|
| DIST TO RW36 | 9 | 8 | 7 | 6 | 5 | 4 | 3 | 2 |
| ALT (HGT)    | - | - | - | - | - | - | - | - |



| CAT OF ACFT            |                 | A         | B         | C           | D           |
|------------------------|-----------------|-----------|-----------|-------------|-------------|
| OCA (H)<br>STRAIGHT-IN | RNP 0.3 (2.5%*) | 325 (296) | 348 (319) | 366 (337)   | 385 (356)   |
|                        | RNP 0.3 (5.0%*) | -         | 335 (306) | 345 (316)   | 366 (337)   |
| CIRCLING               |                 | 700 (670) |           | 1150 (1120) | 1680 (1650) |

NOTE: \*MNM MISSED APCH CLIMB GRADIENT.

CHANGES: NEW PROCEDURE.

## ENZV RNP E RWY 36 (AR) - RECOMMENDED CODING

| SN | PD | WI    | Fly-over | °M (°T)        | MAG VAR | DIST (NM) | REC NAVAID | TD | ALT (FT) | Speed (KT) | VPA (°)/TCH (FT) | ARC CENTRE RADIUS (NM) | RNP (NM) |
|----|----|-------|----------|----------------|---------|-----------|------------|----|----------|------------|------------------|------------------------|----------|
| 10 | IF | ISUDE | -        | -              | -2.0    | -         | -          | -  | A3000+   | K220-      | -                | -                      | 1.0      |
| 20 | TF | ZV340 | -        | -              | -2.0    | 2.5       | -          | -  | A2500+   | -          | -                | -                      | 1.0      |
| 30 | TF | ZV341 | -        | -              | -2.0    | 1.8       | -          | -  | A2000+   | -          | -                | -                      | 0.7      |
| 40 | TF | ZV342 | -        | -              | -2.0    | 1.3       | -          | -  | A1700+   | -          | -                | -                      | 0.5      |
| 50 | RF | ZV333 | -        | -              | -2.0    | 3.0       | -          | R  | -        | -          | -3.0             | ZV011<br>2.100         | 0.3      |
| 60 | TF | RW36  | Y        | -              | -2.0    | 2.1       | -          | -  | -        | -          | -3.0/50          | -                      | 0.3      |
| 70 | TF | EGOKE | -        | -              | -2.0    | 15.0      | -          | -  | -        | -          | -                | -                      | 1.0      |
| 80 | HM | EGOKE | -        | 357<br>(359.1) | -2.0    | 1 MIN     | -          | L  | A3000    | -          | -                | -                      | 1.0      |

Note: Recommended coding is based on ARINC 424 and is provided solely to indicate which procedure design protection areas were used in the Instrument Flight Procedure Design process.

**ENZV RNP E RWY 36 (AR) - SIGNIFICANT POINTS**

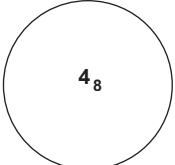
| <b>Name</b> | <b>Latitude</b> | <b>Longitude</b> |
|-------------|-----------------|------------------|
| EGOKE       | 590712.40N      | 0053749.66E      |
| ISUDE       | 584727.87N      | 0055238.06E      |
| ZV011       | 585010.95N      | 0054223.04E      |
| ZV333       | 585009.06N      | 0053820.62E      |
| ZV340       | 584745.01N      | 0054751.68E      |
| ZV341       | 584757.24N      | 0054425.43E      |
| ZV342       | 584806.06N      | 0054155.77E      |

CHANGES: NEW PAGE

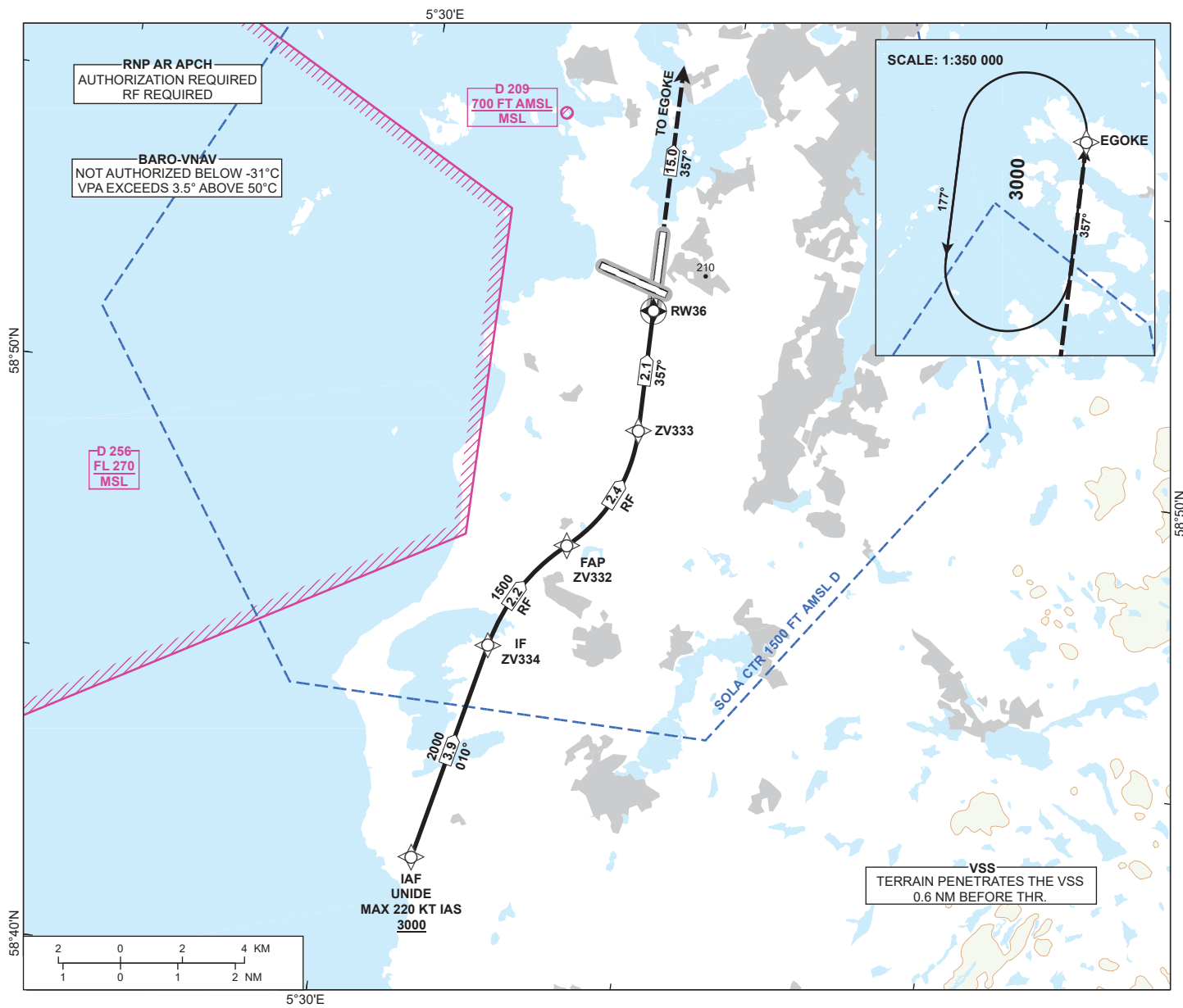


# INSTRUMENT APPROACH CHART - ICAO

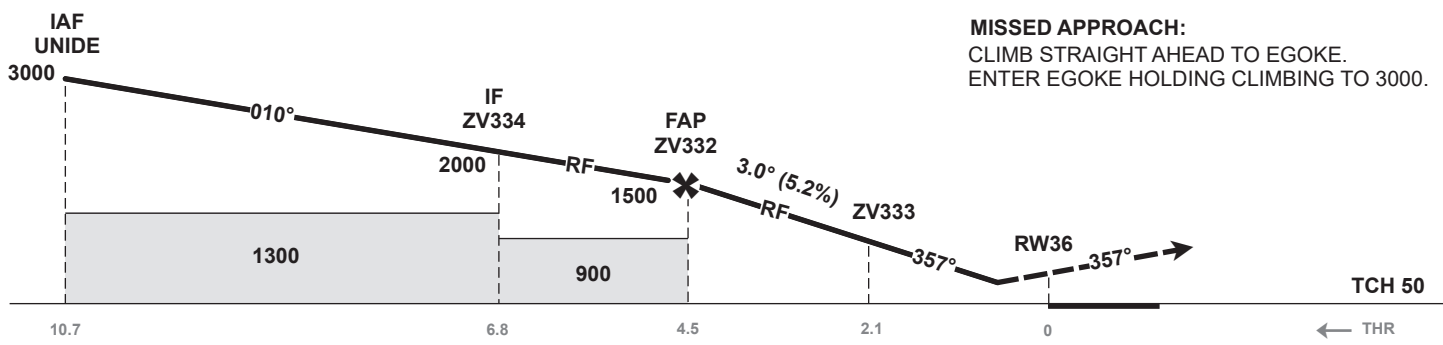
## STAVANGER SOLA RNP 0 RWY 36 (AR)

|  |                      |                                     |
|--|----------------------|-------------------------------------|
|  <p>MSA 25 NM ARP</p> | ATIS: 126.000        | AD ELEV: 30                         |
|  | APP: 119.600 119.400 | THR ELEV: 29                        |
|  | 118.500              | HGT RELATED TO THR 36               |
|  | TWR: 118.350 122.100 | CIRCLING HGT RELATED TO AD ELEV     |
|  | GND: 121.750         | DIST IN NM. ELEV, ALT AND HGT IN FT |
| SCALE 1:200 000  |                      | VAR 2° E (2020)                     |

TRANSITION ALTITUDE  
7000



|              |   |   |   |   |   |   |   |   |
|--------------|---|---|---|---|---|---|---|---|
| DIST TO RW36 | 9 | 8 | 7 | 6 | 5 | 4 | 3 | 2 |
| ALT (HGT)    | - | - | - | - | - | - | - | - |



| CAT OF ACFT            |                 | A         | B         | C           | D           |
|------------------------|-----------------|-----------|-----------|-------------|-------------|
| OCA (H)<br>STRAIGHT-IN | RNP 0.3 (2.5%*) | 325 (296) | 348 (319) | 366 (337)   | 385 (356)   |
|                        | RNP 0.3 (5.0%*) | -         | 335 (306) | 345 (316)   | 366 (337)   |
| CIRCLING               |                 | 700 (670) |           | 1150 (1120) | 1680 (1650) |

NOTE: \*MNM MISSED APCH CLIMB GRADIENT.

CHANGES: NEW PROCEDURE.

**ENZV RNP O RWY 36 (AR) - RECOMMENDED CODING**

| SN | PD | WI    | Fly-over | °M (°T)        | MAG VAR | DIST (NM) | REC NAVAID | TD | ALT (FT) | Speed (KT) | VPA (°)/TCH (FT) | ARC CENTRE RADIUS (NM) | RNP (NM) |
|----|----|-------|----------|----------------|---------|-----------|------------|----|----------|------------|------------------|------------------------|----------|
| 10 | IF | UNIDE | -        | -              | -2.0    | -         | -          | -  | A3000+   | K220-      | -                | -                      | 1.0      |
| 20 | TF | ZV334 | -        | -              | -2.0    | 3.9       | -          | -  | A2000+   | -          | -                | -                      | 1.0      |
| 30 | RF | ZV332 | -        | -              | -2.0    | 2.2       | -          | R  | A1500+   | -          | -                | ZV008<br>3.500         | 1.0      |
| 40 | RF | ZV333 | -        | -              | -2.0    | 2.4       | -          | L  | -        | -          | -3.0             | ZV007<br>2.800         | 0.3      |
| 50 | TF | RW36  | Y        | -              | -2.0    | 2.1       | -          | -  | -        | -          | -3.0/50          | -                      | 0.3      |
| 60 | TF | EGOKE | -        | -              | -2.0    | 15.0      | -          | -  | -        | -          | -                | -                      | 1.0      |
| 70 | HM | EGOKE | -        | 357<br>(359.1) | -2.0    | 1 MIN     | -          | L  | A3000    | -          | -                | -                      | 1.0      |

Note: Recommended coding is based on ARINC 424 and is provided solely to indicate which procedure design protection areas were used in the Instrument Flight Procedure Design process.

**ENZV RNP O RWY 36 (AR) - SIGNIFICANT POINTS**

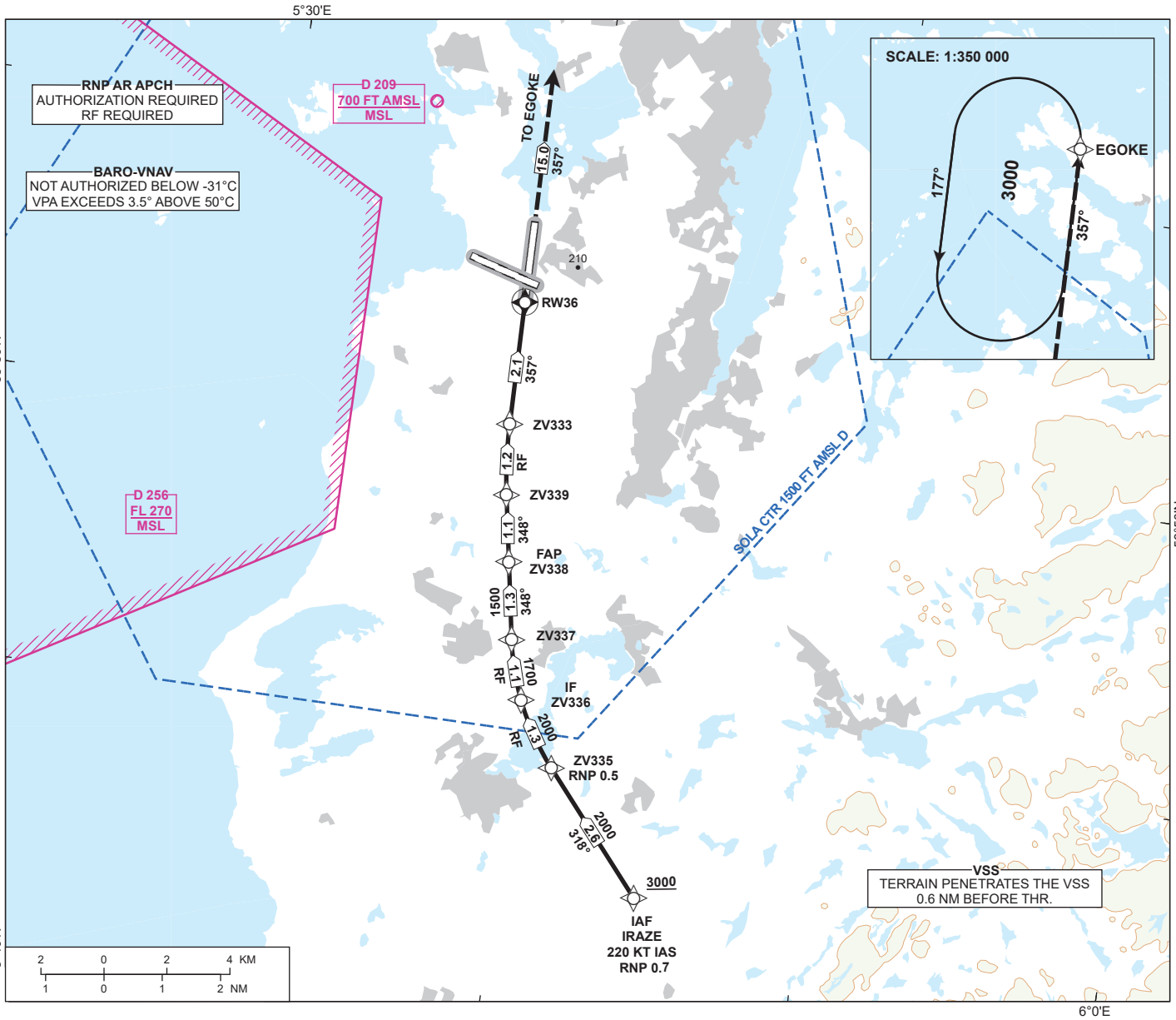
| <b>Name</b> | <b>Latitude</b> | <b>Longitude</b> |
|-------------|-----------------|------------------|
| EGOKE       | 590712.40N      | 0053749.66E      |
| UNIDE       | 584217.24N      | 0053250.08E      |
| ZV007       | 585006.34N      | 0053257.40E      |
| ZV008       | 584523.10N      | 0054057.01E      |
| ZV332       | 584800.52N      | 0053630.83E      |
| ZV333       | 585009.06N      | 0053820.62E      |
| ZV334       | 584606.30N      | 0053422.44E      |

CHANGES: NEW PAGE

# INSTRUMENT APPROACH CHART - ICAO

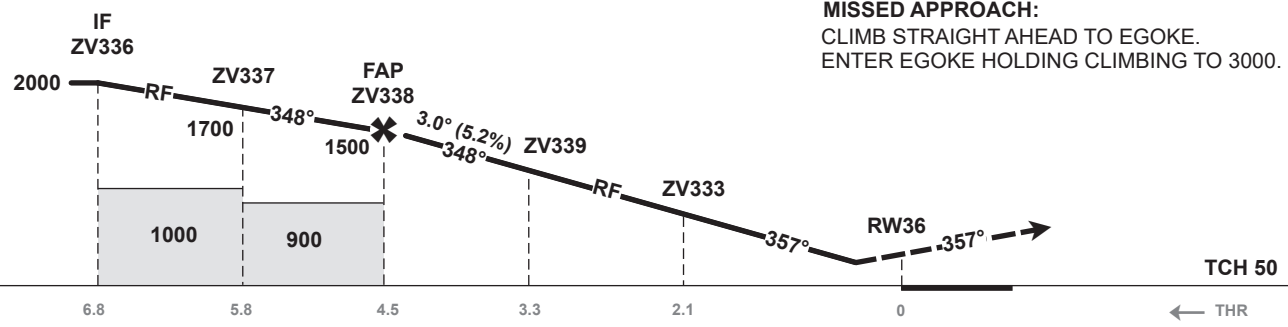
**STAVANGER  
SOLA  
RNP S RWY 36 (AR)**  
TRANSITION ALTITUDE  
7000

|                      |                      |                                     |
|----------------------|----------------------|-------------------------------------|
| <p>MSA 25 NM ARP</p> | ATIS: 126.000        | AD ELEV: 30                         |
|                      | APP: 119.600 119.400 | THR ELEV: 29                        |
|                      | 118.500              | HGT RELATED TO THR 36               |
|                      | TWR: 118.350 122.100 | CIRCLING HGT RELATED TO AD ELEV     |
|                      | GND: 121.750         | DIST IN NM. ELEV, ALT AND HGT IN FT |
|                      | SCALE 1:200 000      | VAR 2° E (2020)                     |



|              |   |   |   |   |   |   |   |   |
|--------------|---|---|---|---|---|---|---|---|
| DIST TO RW36 | 9 | 8 | 7 | 6 | 5 | 4 | 3 | 2 |
| ALT (HGT)    | - | - | - | - | - | - | - | - |

**MISSED APPROACH:**  
CLIMB STRAIGHT AHEAD TO EGOKE.  
ENTER EGOKE HOLDING CLIMBING TO 3000.



| CAT OF ACFT            |                 | A         | B         | C           | D           |
|------------------------|-----------------|-----------|-----------|-------------|-------------|
| OCA (H)<br>STRAIGHT-IN | RNP 0.3 (2.5%*) | 325 (296) | 348 (319) | 366 (337)   | 385 (356)   |
|                        | RNP 0.3 (5.0%*) | -         | 335 (306) | 345 (316)   | 366 (337)   |
| CIRCLING               |                 | 700 (670) |           | 1150 (1120) | 1680 (1650) |

NOTE: \*MNM MISSED APCH CLIMB GRADIENT.

CHANGES: NEW PROCEDURE.

**ENZV RNP S RWY 36 (AR) - RECOMMENDED CODING**

| SN  | PD | WI    | Fly-over | °M (°T)        | MAG VAR | DIST (NM) | REC NAVAID | TD | ALT (FT) | Speed (KT) | VPA (°)/TCH (FT) | ARC CENTRE RADIUS (NM) | RNP (NM) |
|-----|----|-------|----------|----------------|---------|-----------|------------|----|----------|------------|------------------|------------------------|----------|
| 10  | IF | IRAZE | -        | -              | -2.0    | -         | -          | -  | A3000+   | K220-      | -                | -                      | 0.7      |
| 20  | TF | ZV335 | -        | -              | -2.0    | 2.6       | -          | -  | A2000+   | -          | -                | -                      | 0.7      |
| 30  | RF | ZV336 | -        | -              | -2.0    | 1.3       | -          | R  | A2000+   | -          | -                | ZV009<br>4.400         | 0.5      |
| 40  | RF | ZV337 | -        | -              | -2.0    | 1.1       | -          | R  | A1700+   | -          | -                | ZV009<br>4.400         | 0.5      |
| 50  | TF | ZV338 | -        | -              | -2.0    | 1.3       | -          | -  | A1500+   | -          | -                | -                      | 0.5      |
| 60  | TF | ZV339 | -        | -              | -2.0    | 1.1       | -          | -  | -        | -          | -3.0             | -                      | 0.3      |
| 70  | RF | ZV333 | -        | -              | -2.0    | 1.2       | -          | R  | -        | -          | -3.0             | ZV010<br>7.600         | 0.3      |
| 80  | TF | RW36  | Y        | -              | -2.0    | 2.1       | -          | -  | -        | -          | -3.0/50          | -                      | 0.3      |
| 90  | TF | EGOKE | -        | -              | -2.0    | 15.0      | -          | -  | -        | -          | -                | -                      | 1.0      |
| 100 | HM | EGOKE | -        | 357<br>(359.1) | -2.0    | 1 MIN     | -          | L  | A3000    | -          | -                | -                      | 1.0      |

Note: Recommended coding is based on ARINC 424 and is provided solely to indicate which procedure design protection areas were used in the Instrument Flight Procedure Design process.

**ENZV RNP S RWY 36 (AR) - SIGNIFICANT POINTS**

| <b>Name</b> | <b>Latitude</b> | <b>Longitude</b> |
|-------------|-----------------|------------------|
| EGOKE       | 590712.40N      | 0053749.66E      |
| IRAZE       | 584226.10N      | 0054432.21E      |
| ZV009       | 584716.54N      | 0054743.16E      |
| ZV010       | 585015.31N      | 0055258.00E      |
| ZV333       | 585009.06N      | 0053820.62E      |
| ZV335       | 584426.36N      | 0054116.28E      |
| ZV336       | 584530.95N      | 0053958.63E      |
| ZV337       | 584630.95N      | 0053923.62E      |
| ZV338       | 584749.26N      | 0053856.97E      |
| ZV339       | 584856.90N      | 0053833.92E      |

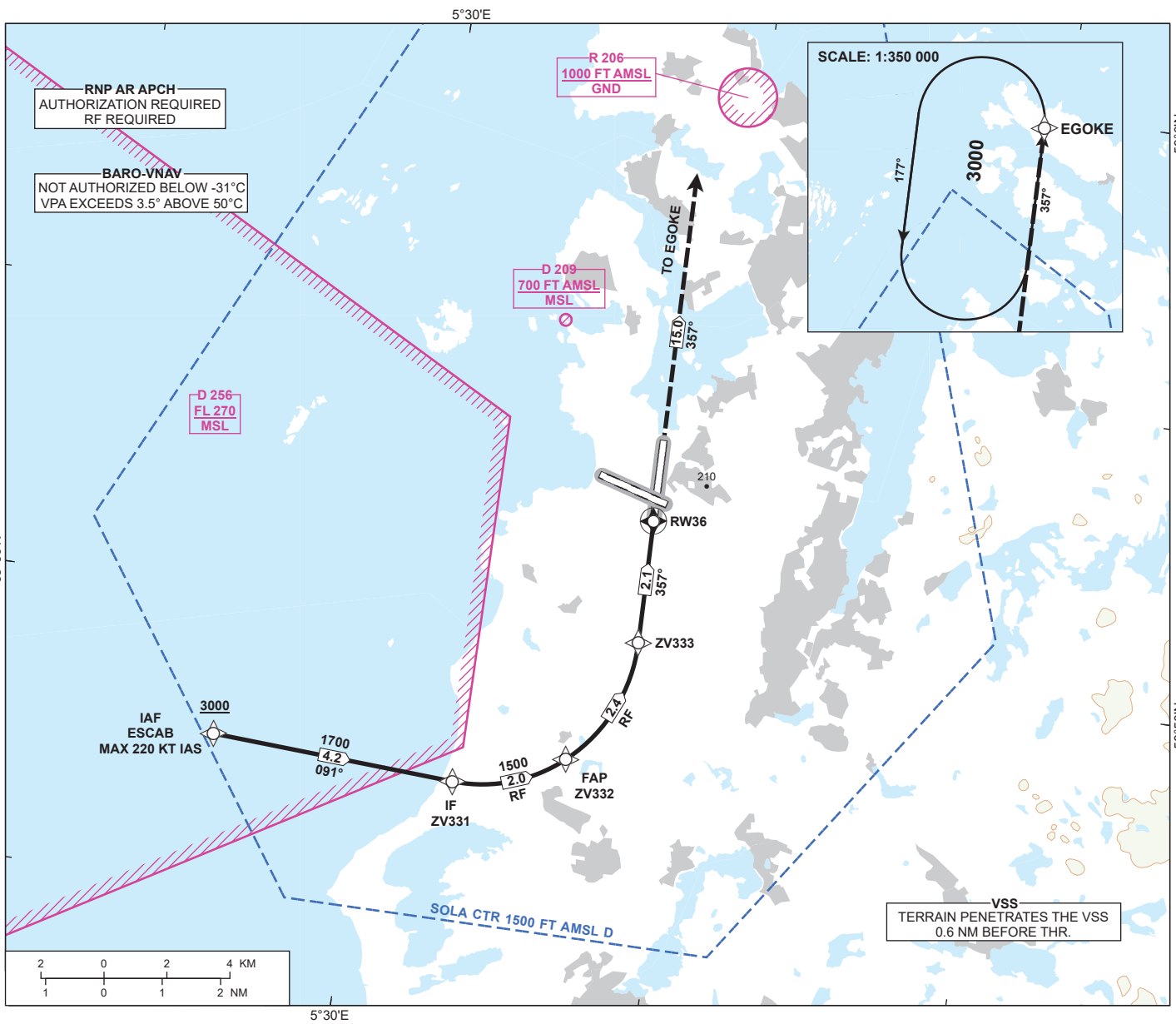
CHANGES: NEW PAGE

# INSTRUMENT APPROACH CHART - ICAO

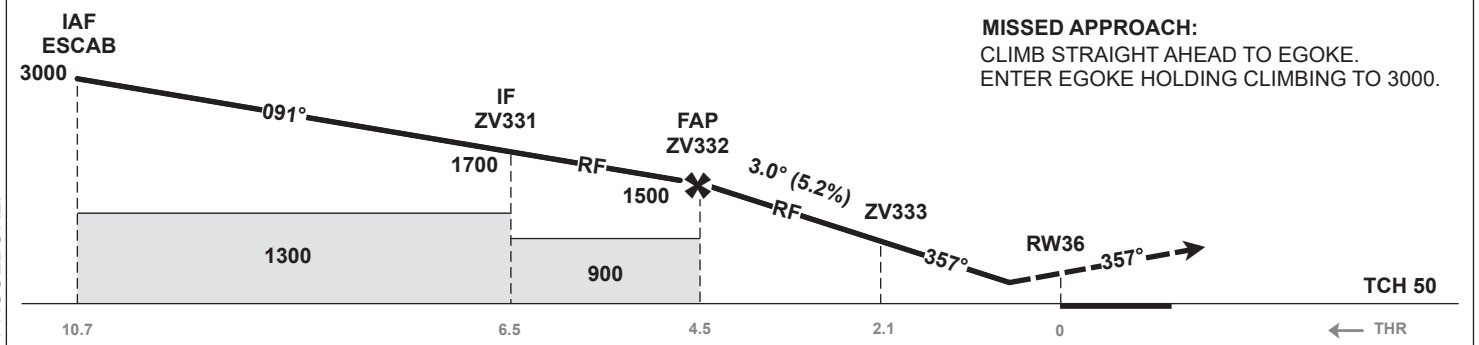
## STAVANGER SOLA RNP W RWY 36 (AR)

|                   |                      |                                     |
|-------------------|----------------------|-------------------------------------|
| <br>MSA 25 NM ARP | ATIS: 126.000        | AD ELEV: 30                         |
|                   | APP: 119.600 119.400 | THR ELEV: 29                        |
|                   | 118.500              | HGT RELATED TO THR 36               |
|                   | TWR: 118.350 122.100 | CIRCLING HGT RELATED TO AD ELEV     |
|                   | GND: 121.750         | DIST IN NM. ELEV, ALT AND HGT IN FT |
| SCALE 1:200 000   |                      | VAR 2° E (2020)                     |

TRANSITION ALTITUDE  
7000



|              |   |   |   |   |   |   |   |   |
|--------------|---|---|---|---|---|---|---|---|
| DIST TO RW36 | 9 | 8 | 7 | 6 | 5 | 4 | 3 | 2 |
| ALT (HGT)    | - | - | - | - | - | - | - | - |



**MISSED APPROACH:**  
CLIMB STRAIGHT AHEAD TO EGOKE.  
ENTER EGOKE HOLDING CLIMBING TO 3000.

| CAT OF ACFT            |                 | A         | B         | C           | D           |
|------------------------|-----------------|-----------|-----------|-------------|-------------|
| OCA (H)<br>STRAIGHT-IN | RNP 0.3 (2.5%*) | 325 (296) | 348 (319) | 366 (337)   | 385 (356)   |
|                        | RNP 0.3 (5.0%*) | -         | 335 (306) | 345 (316)   | 366 (337)   |
| CIRCLING               |                 | 700 (670) |           | 1150 (1120) | 1680 (1650) |

NOTE: \*MNM MISSED APCH CLIMB GRADIENT.

CHANGES: NEW PROCEDURE.

## ENZV RNP W RWY 36 (AR) - RECOMMENDED CODING

| SN | PD | WI    | Fly-over | °M (°T)        | MAG VAR | DIST (NM) | REC NAVAID | TD | ALT (FT) | Speed (KT) | VPA (°)/TCH (FT) | ARC CENTRE RADIUS (NM) | RNP (NM) |
|----|----|-------|----------|----------------|---------|-----------|------------|----|----------|------------|------------------|------------------------|----------|
| 10 | IF | ESCAB | -        | -              | -2.0    | -         | -          | -  | A3000+   | K220-      | -                | -                      | 1.0      |
| 20 | TF | ZV331 | -        | -              | -2.0    | 4.2       | -          | -  | A1700+   | -          | -                | -                      | 1.0      |
| 30 | RF | ZV332 | -        | -              | -2.0    | 2.0       | -          | L  | A1500+   | -          | -                | ZV006<br>2.600         | 1.0      |
| 40 | RF | ZV333 | -        | -              | -2.0    | 2.4       | -          | L  | -        | -          | -3.0             | ZV007<br>2.800         | 0.3      |
| 50 | TF | RW36  | Y        | -              | -2.0    | 2.1       | -          | -  | -        | -          | -3.0/50          | -                      | 0.3      |
| 60 | TF | EGOKE | -        | -              | -2.0    | 15.0      | -          | -  | -        | -          | -                | -                      | 1.0      |
| 70 | HM | EGOKE | -        | 357<br>(359.1) | -2.0    | 1 MIN     | -          | L  | A3000    | -          | -                | -                      | 1.0      |

Note: Recommended coding is based on ARINC 424 and is provided solely to indicate which procedure design protection areas were used in the Instrument Flight Procedure Design process.



**ENZV RNP W RWY 36 (AR) - SIGNIFICANT POINTS**

| <b>Name</b> | <b>Latitude</b> | <b>Longitude</b> |
|-------------|-----------------|------------------|
| EGOKE       | 590712.40N      | 0053749.66E      |
| ESCAB       | 584735.79N      | 0052456.01E      |
| ZV006       | 584957.35N      | 0053312.66E      |
| ZV007       | 585006.34N      | 0053257.40E      |
| ZV331       | 584721.98N      | 0053255.74E      |
| ZV332       | 584800.52N      | 0053630.83E      |
| ZV333       | 585009.06N      | 0053820.62E      |

CHANGES: NEW PAGE